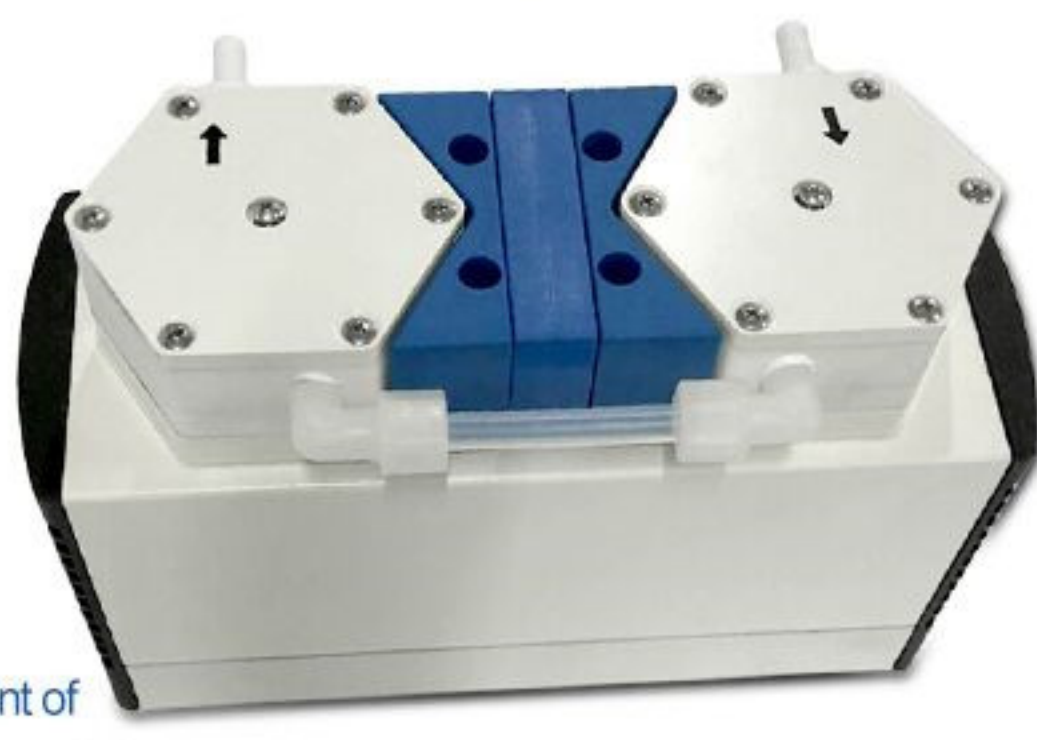
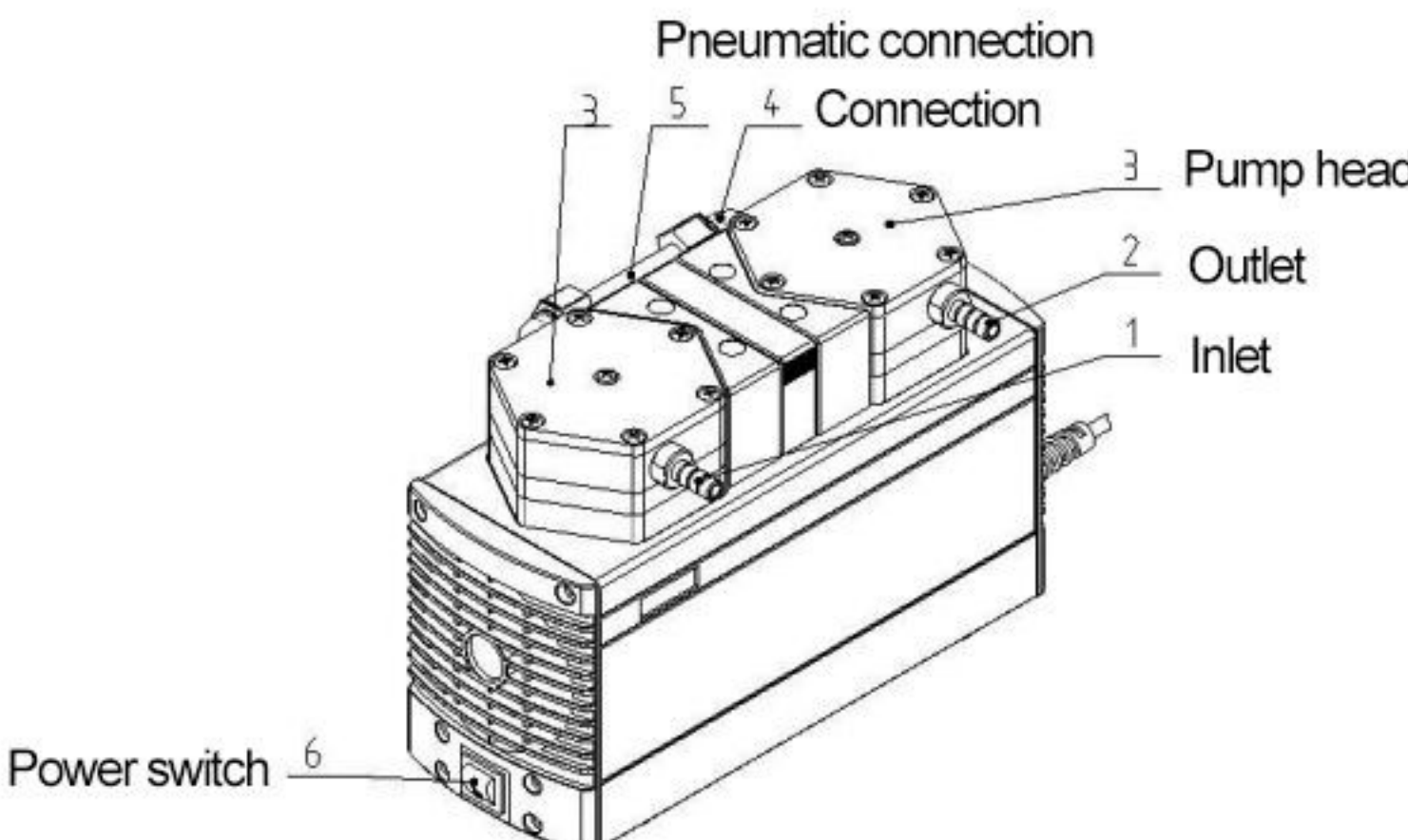


Vacuum Diaphragm Pump P20

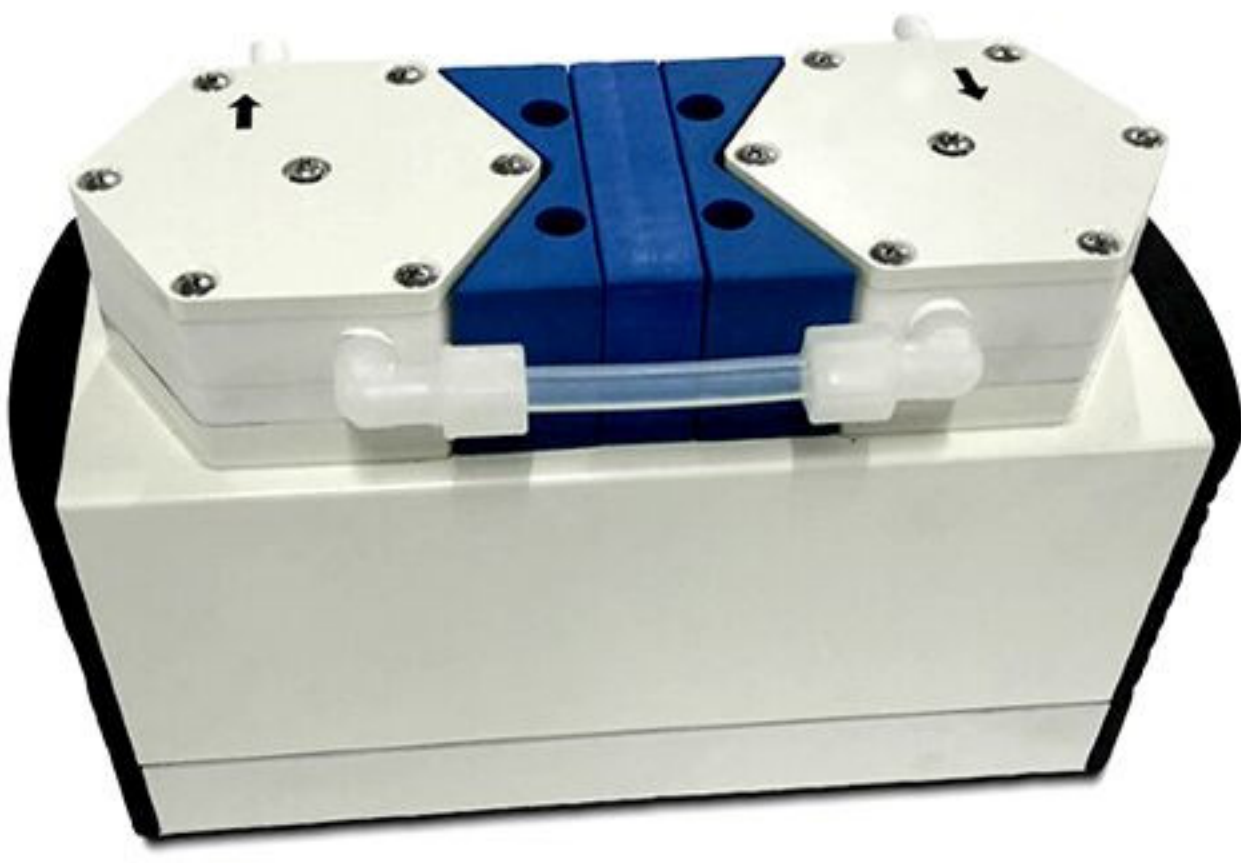
- ✓ Solid phase extraction;
- ✓ Vacuum filtration;
- ✓ Vacuum distillation;
- ✓ Rotary evaporation;
- ✓ Vacuum drying;
- ✓ Vacuum concentration;
- ✓ Complete replacement of water circulation pump, suitable for treatment of corrosive gases in chemical, pharmaceutical, petrochemical and other industries.



PRODUCT INTRODUCTION



PRODUCT DISPLAY



CHARACTERISTICS OF STRUCTURE



Core Technology

Teflon composite diaphragm: With patented structural design, the finite element analysis of the anti-fatigue properties of the diaphragm greatly prolongs the service life of the diaphragm without the problem of oil mist pollution. The rubber surface is coated with special PTFE (thickness $\leq 0.25\text{mm}$), which greatly improves the corrosion resistance of the pump. It can withstand most corrosive media (including strong acid and alkali), compared with traditional diaphragm. Tightness, corrosion resistance and strength are superior;



Rubber valve features

- 1) The special structural design is combined with the special pump head to limit the vibration amplitude of the valve plate while ensuring sufficient flow, and the vibration part of the valve plate is only subject to the pressure from the medium, which can greatly improve the service life of the valve piece;
- 2) Special design makes the valve plate better sealed in one direction, even if there is condensation droplet on the valve plate, it can ensure good sealing effect;

Pump head features

The pump head material is all made of a new grade of polytetrafluoroethylene (PTFE) material with great chemical corrosion resistance;

Product Parameters

Model	P20-2	
Votalge & frenqucy	110 V/50 Hz	220 V/50 Hz
Power	130W	120 W
Pump head type	Two-stage	
Ultimate vacuum [mbar abs.]	8 mbar	
Operation pressure	1 bar (Max)	
Flow rate [l/min] at atm. pressure	20 L/min	
Connectors for tube (mm)	10mm	
Permissible gas and ambient temperature	+5 ℃ ~ +40 ℃	
Pump head	PTFE	
Diaphragm	PTFE coated	
Valves	FKM or FFPM	
Rotate speed	1450 RPM	
Humidity	<80%	
Dimension (LxWxH)	315x165x210 mm	
Weight	9.6Kg	